

# FCDC NEWS

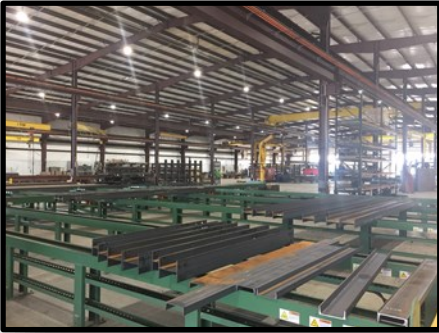
Paul Bean—Executive Director | paul@thinkfranklinco.org

## FCDC Member Feature

Humble, under the radar, quiet, and sitting in the background. That is how I would describe one of our top industries in the county. Select Steel has been in operation since 2008. However, their history and their experience goes way beyond that. Select Steel is a quiet gem that is located in Wellsville but has a global footprint and a strong but quiet community presence.

Bill Thompson and Chase Doherty are the owners of Select Steel. Their business is a true reflection of these two gentlemen. They are quiet, humble, and very talented. However, before we go further, I am sure they would want us to let you know that Bill's wife Kim and Chase's wife Denise are what keep this business running. When you visit the plant, these ladies are the first folks you meet, and they always have a smile.

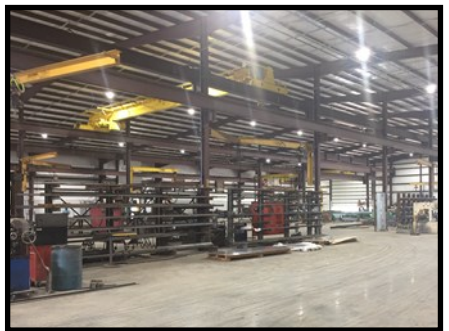
Bill started the business out of his garage in 2000. He graduated to a pole barn with a concrete floor and built the business from there. He shared that they "manufactured a little and fixed a lot". He learned steel fabrication working on handrails, golf carts, and other structural projects. In speaking to Chase, it sounds like he grew up with steel in his hands and not a pacifier. He learned his skills by working with his grandfather as a kid and has never looked back. He worked on Arrowhead Stadium and Kaufman stadium. He worked his way up in the industry and became part owner of Select Steel by joining Bill in 2015.



Select Steel has provided fabricated steel internationally and around the country. They are known for high quality and great customer service. They employ 22 folks at the plant in Wellsville. Those of you that know about industry turnover, you will be impressed to know that 10% of their workforce has been with them since the beginning. This says a lot about the workplace environment at Select Steel.

Select Steel was officially created in 2008 with the construction of a new facility in Ottawa. However, they quickly outgrew that facility and had to find an area large enough to serve their growing company. As a result, they built a new and larger facility in 2019 and are just getting ready to celebrate their first anniversary in this building. But do not look for a flashing sign or a big celebration from these guys.

As mentioned, Select Steel is a reflection of the ownership. They are very understated and humble, but incredibly talented and professional. This is true for Kim and Denise as well as Bill and Chase. They built the business by putting their customers first and providing high quality service and product. This is reflected in the fact that much of their business is repeat or comes to them by word of mouth. But they are not just great to their customers.



These owners support, quietly, their community. They support many local causes and efforts including Legacy Square in Ottawa. Their favorite philanthropy is for services that benefit children and lift up faith communities and their outreach. They are generous but do not do it for attention, but to truly make a difference. The base business is hard tough steel, but the people running the business have hearts for their community.

So, as you drive by Select Steel in Wellsville please think of the high quality of work taking place within those walls, as well as the manner in which it is being done. We can be proud to know that Select Steel is here in our community providing jobs, tax revenue, and philanthropic support, all while providing a quality product around the globe.

**It is a GREAT day to live in Franklin County!**

*Paul Bean*

Paul Bean  
Executive Director  
Franklin County Development Council  
785-229-0855 (A New Direct Line)

